

Raymond N. Herb, Sr.  
Raymond N. Herb, Jr.  
Susan M. Herb  
Kathleen M. Herb  
Paul Rauch



*Realtors/Since 1927*  
*(717) 272-5637*

**FOR SALE in Lebanon County . . . . .**  
**1049-51-53 East Cumberland Street, Lebanon, PA 17042**



- ◆ *3,200 SF Retail Space*
- ◆ *Glass Show Windows*
- ◆ *Public Water & Sewer*
- ◆ *Standard Electric Svc.*
- ◆ *Ample Bath Facilities*
- ◆ *Includes Rental Home*
- ◆ *Solid Block Construction*
- ◆ *Zoned CA - Comm. Auto*
- ◆ *Private Off-Street Parking*
- ◆ *Gas Fired W/A Heat W/AC*
- ◆ *1/1/16 R.E. Taxes \$6,484/YR*
- ◆ *W/Good Highway Frontage*

**This property is located on U.S. State Route 422. It has good highway frontage and is occupied by a mattress store. The building is solid block construction with a great location. There is also a rental home and storage building. If it fits your requirements, please give us a call.**

**Call Ray Herb, Jr. at (717) 272-5637**  
**Commercial/Industrial Sales and Leasing**

---

**Mailing Address: P.O. Box 706, Lebanon, PA 17042**

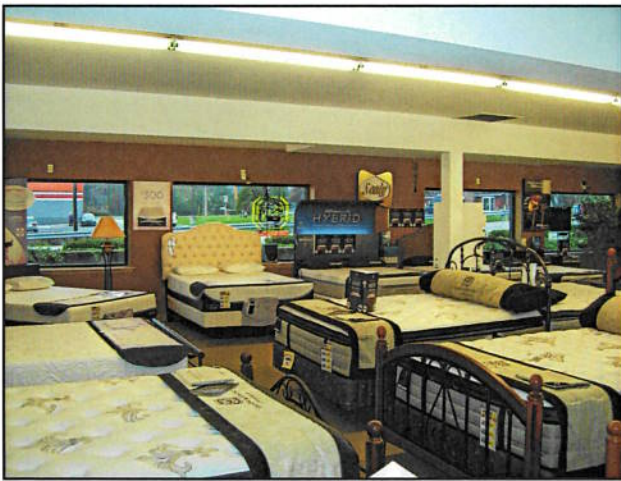




Side View of Property



Rental Home & Storage Building



Showroom



Bath Facilities

### COUNTY MAP



### LOCATION MAP

