

Raymond N. Herb, Jr.  
Susan M. Herb  
Kathleen M. Herb  
Jeffrey A. Carpenter



Realtors / Since 1927  
(717) 272-5637

FOR LEASE in Lebanon County . . . . .  
718 Poplar Street, Lebanon, PA 17042

**POPLAR COMMONS**



- ◆ *14,098 SF Office/Retail*
- ◆ *1,080 to 3,600 SF Suites*
- ◆ *Next to Rails To Trails*
- ◆ *3-Phase Elect. Available*
- ◆ *Public Water & Sewer*
- ◆ *W/ADA Bath Facilities*
- ◆ *Solid Masonry Construction*
- ◆ *Gas Fired W/A Heat W/AC*
- ◆ *Zoned O & I w/Spec. Except.*
- ◆ *Space Provided as Vanilla Box*
- ◆ *W/Private Off-Street Parking*
- ◆ *"GREAT" Southside Location*

This property is located in the city of Lebanon and will consist of office/retail suites provided as a vanilla box. There is plenty of off-street parking. If you would like more information, please give us a call.

Call Ray Herb, Jr. at (717) 272-5637

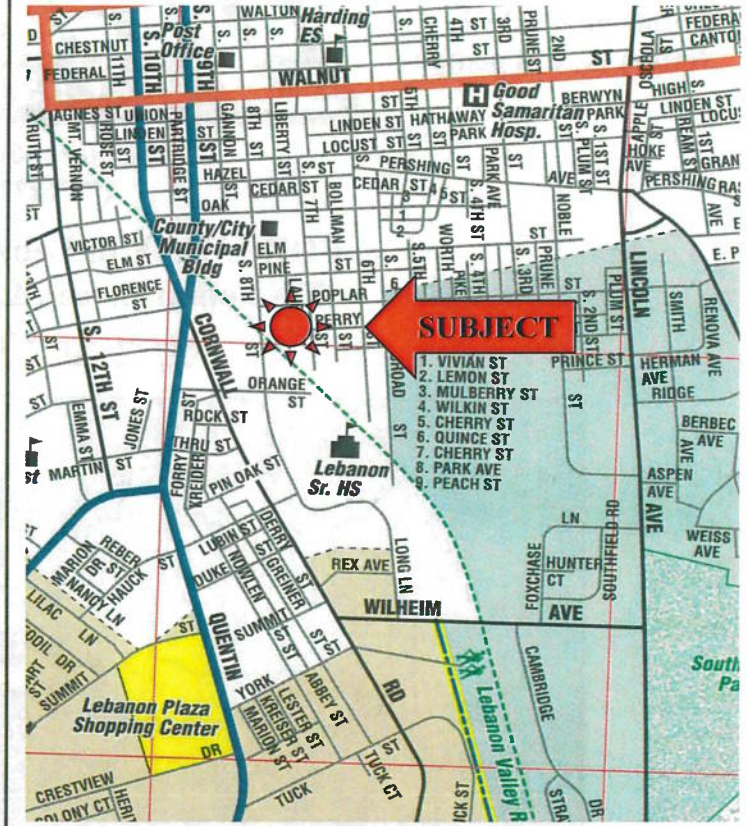
---

Mailing Address: P.O. Box 706, Lebanon, PA 17042

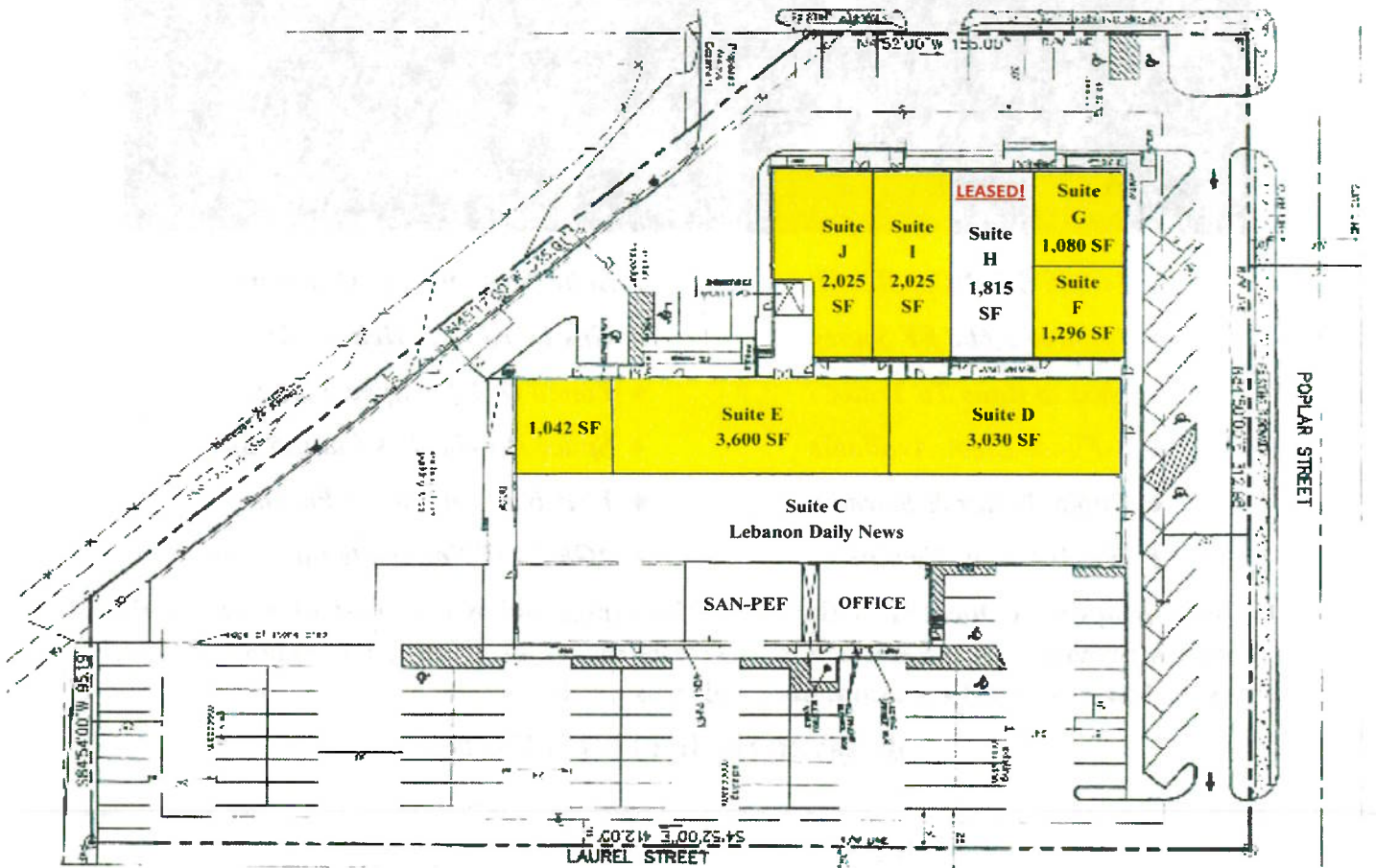
# COUNTY MAP



# LOCATION MAP



# Floor Plan



NOT TO SCALE