

Raymond N. Herb, Jr.  
Susan M. Herb  
Kathleen M. Herb  
Jeffrey A. Carpenter



Realtors / Since 1927  
(717) 272-5637

**FOR SALE in Lebanon County . . . . .**  
**1901 West Cumberland Street, Lebanon, PA 17042**



- ◆ *With 2,750 Square Feet*
- ◆ *Chapel on Main Level*
- ◆ *Ample Bath Facilities*
- ◆ *Standard Electric Svc.*
- ◆ *Gas W/A Heat & AC*
- ◆ *Public Water & Sewer*
- ◆ *Stone and Frame Construction*
- ◆ *Zoned C - Commercial General*
- ◆ *Paved Private Parking in Rear*
- ◆ *Food Prep & Reception Area*
- ◆ *1/1/18 R.E. Taxes \$7,342/YR*
- ◆ *Property is Situate on 1.29 AC*

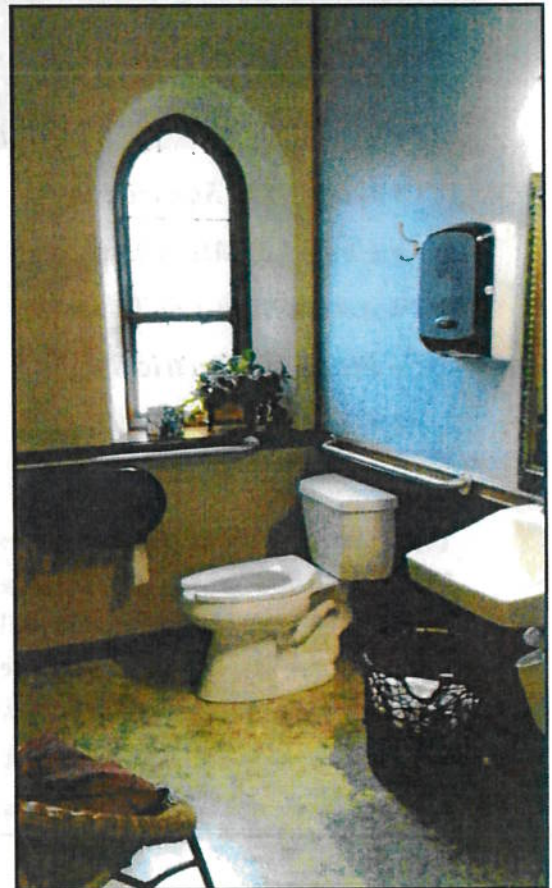
This property is located in West Lebanon Township and is an excellent venue for weddings and other events. Same is in excellent condition and the furniture and décor are available for purchase. The current owners are booking events through October 2018. For additional information, please call our office or email at [geller.re@comcast.net](mailto:geller.re@comcast.net).

Call Ray Herb, Jr. at (717) 272-5637  
Commercial/Industrial Sales and Leasing

Mailing Address: P.O. Box 706, Lebanon, PA 17042



**First Floor**





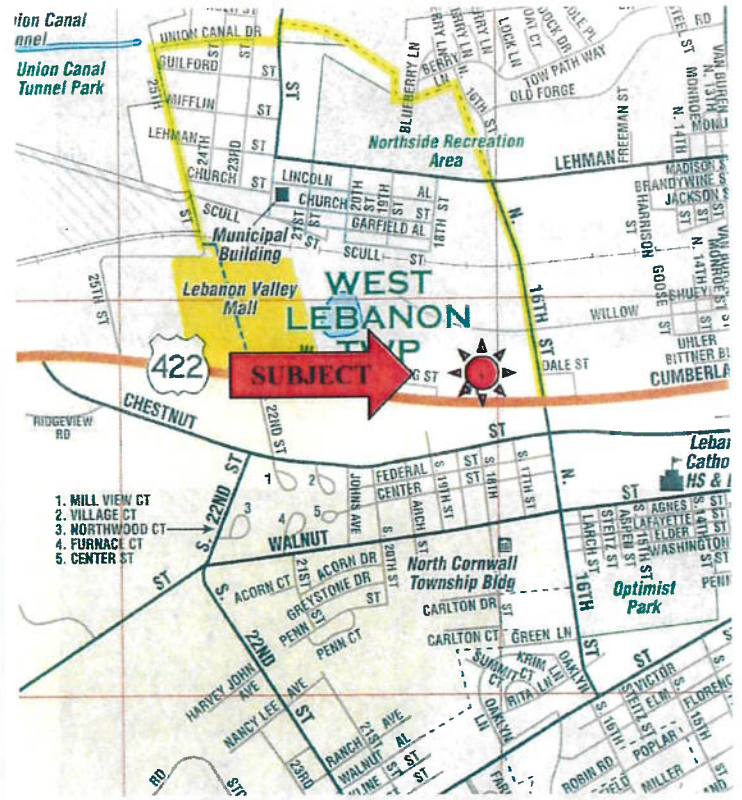
Lower Level



## COUNTY MAP



## LOCATION MAP



### *Lebanon County, Pennsylvania*

Located in south central Pennsylvania, just twenty-five miles east of the state capital (Harrisburg), the Lebanon Valley offers easy access to most major markets. The City of Lebanon has a population of about 25,000. Lebanon County has over 133,000 with a labor force of 75,000.

Known as “**Pennsylvania Dutch Country**”, Lebanon County is noted for its beautiful pastoral landscape, manicured farmlands, and outstanding dairy and pork products, especially Lebanon Bologna. At the same time, it has a strong industrial heritage, with a history of manufacturing dating back to Colonial times.

Designated an “**URBAN AREA**” by the US Department of Commerce, Lebanon and its surrounding communities support a highly diversified group of manufacturers, transport companies, wholesale and retail merchandisers, financial institutions, and a variety of service businesses. Backing them are utilities offering up-to-the-minute services and technical support at lower-than-average rates.

The Lebanon Valley is also blessed with excellent hospitals and clinics, including the Milton S. Hershey Medical Center, one of America’s leading research and treatment facilities.

The Lebanon Valley offers an unparalleled quality of life. The region’s educational system includes public and parochial, primary and secondary schools, career technical center, excellent under-graduate and graduate studies at Lebanon Valley College, and a variety of nearby universities. In addition, the Valley offers an outstanding array of cultural and recreational resources.