

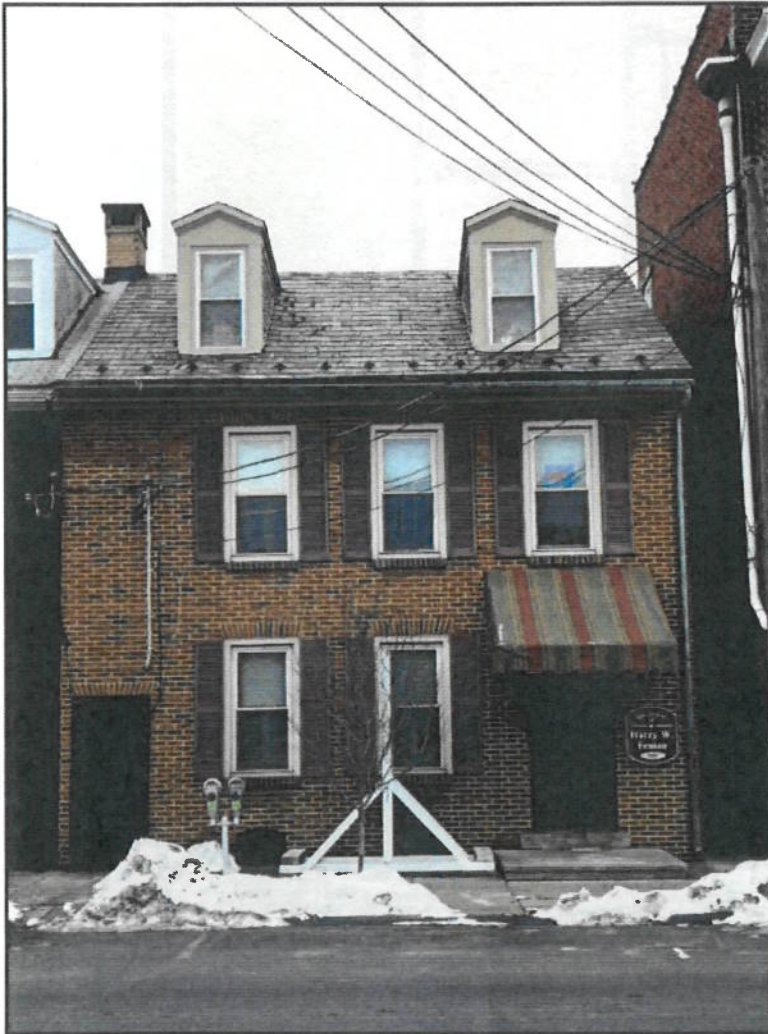
active 4.12.21

Raymond N. Herb, Jr.  
Michael L. Myer  
Susan M. Herb  
Kathleen M. Herb  
Jeffrey A. Carpenter



Realtors / Since 1927  
(717) 272-5637

**FOR LEASE in Lebanon County . . . . .**  
**809 Chestnut Street, Lebanon PA 17042**



- ◆ *Has 1,120 Square Feet*
- ◆ *First Floor Office Space*
- ◆ *Standard Electric Service*
- ◆ *W/Public Water & Sewer*
- ◆ *W/Hot Water Heat & AC*
- ◆ *Zoned Central Business District*
- ◆ *Across from Lebanon Post Office*
- ◆ *Street Parking in Close Proximity*
- ◆ *Has "GREAT" Street Frontage*

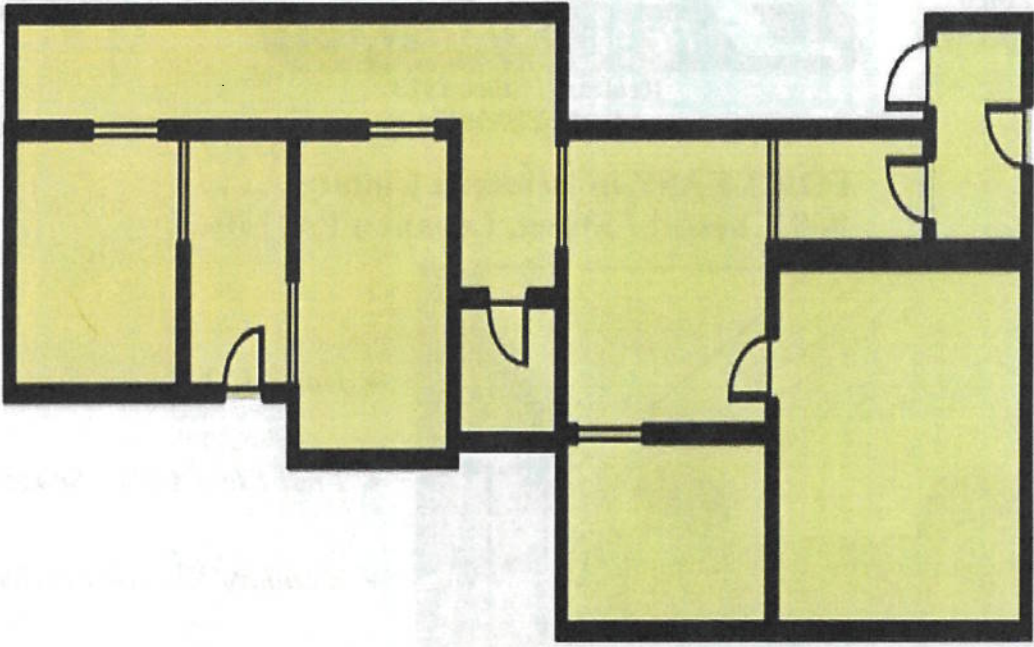
This property is located in the City of Lebanon and was previously occupied by an attorney. Same consists of office space with reception area, several private offices, and bath. There is a combination of hardwood floors and carpeting. Same is within walking distance of the Lebanon Farmers Market. If you have any questions or would like to set up a showing, please give us a call or email at [info@gellerrealestatecompany.com](mailto:info@gellerrealestatecompany.com).

**Call Ray Herb, Jr. or Mike Myer at (717) 272-5637**

**Commercial/Industrial Sales and Leasing**

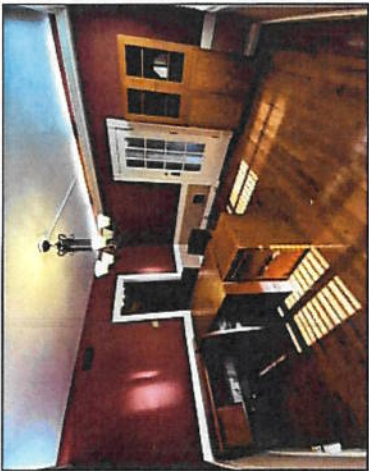
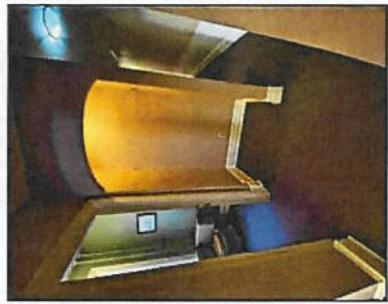
**Mailing Address: 749 E. Cumberland Street, Lebanon, PA 17042**

**Floor Plan**



Not to Scale

**Property Photos**



**COUNTY MAP**



**LOCATION MAP**



Raymond N. Herb, Jr.  
 Michael L. Myer  
 Susan M. Herb  
 Kathleen M. Herb  
 Jeffrey A. Carpenter



Realtors / Since 1927  
 (717) 272-5637



**FOR LEASE in Lebanon County . . . .**  
**1691 Grace Ave, Lebanon, PA 17046**



- ◆ 9,616 SF Office/Classroom Space
- ◆ 7,840 SF Sports Space
- ◆ 1,440 SF Garage Space
- ◆ Standard Electric Svc.
- ◆ Public Water & Sewer
- ◆ Ample Bath Facilities w/Showers
- ◆ Commercial Kitchen
- ◆ Zoned Rural Residential
- ◆ Has Warm Air Heat w/AC
- ◆ Plenty of Off-Street Parking
- ◆ Has Outdoor Sports Field
- ◆ Floor Plan included in Brochure

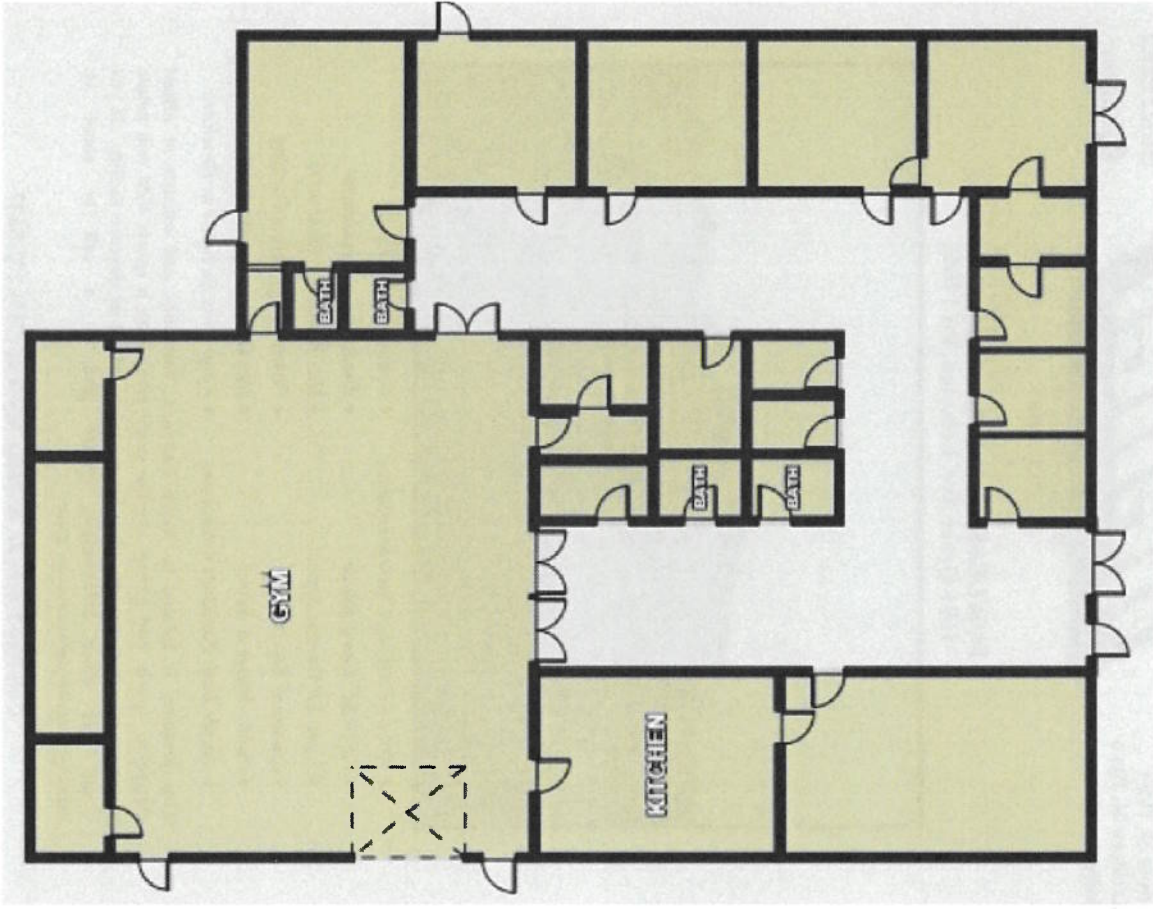
This property is located in North Lebanon Township and consists of office/classroom, sports, and garage storage space along with a sports field and ample parking make this property ideal for a private school or daycare facility. If you would like more information, please give us a call or email at: [info@gellerrealestatecompany.com](mailto:info@gellerrealestatecompany.com).

Call Ray Herb, Jr. or Mike Myer at (717) 272-5637  
 Commercial/Industrial Sales and Leasing

Mailing Address: 749 E. Cumberland Street, Lebanon, PA 17042



**Floor Plan**



NOT TO SCALE

**Photos**



**More Photos on the back!**