

Raymond N. Herb, Jr.
Susan M. Herb
Kathleen M. Herb
Jeffrey A. Carpenter



Realtors / Since 1927
(717) 272-5637



FOR SALE in Lebanon County
133-137 West Penn Avenue, Cleona, PA 17042

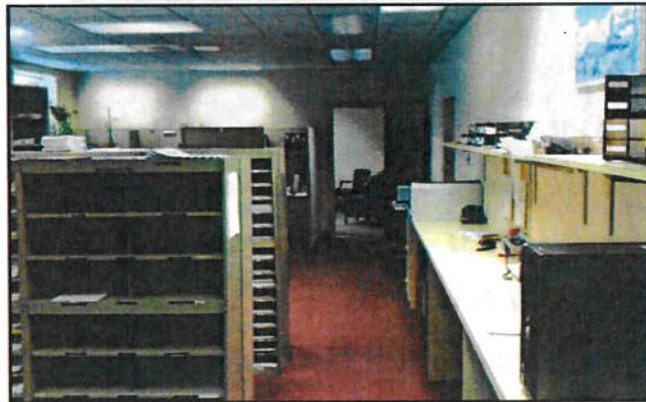


- ◆ *11,244 SF Office Space*
- ◆ *First and Second Floor*
- ◆ *W/Ample Bath Facilities*
- ◆ *Standard Electric Service*
- ◆ *Gas Warm Air Heat & AC*
- ◆ *Public Water and Sewer*
- ◆ *Masonry & Frame Construction*
- ◆ *Zoned CM - Commercial Dist.*
- ◆ *Add'l Paved Parking in Rear*
- ◆ *On Main East/West Highway*
- ◆ *1/1/18 R.E. Taxes \$16,196/YR*
- ◆ *Property is Situate on .63 Acres*

This property is located in the borough of Cleona and consists of first and second floor office space. There are multiple offices, kitchen and bath facilities on each floor, conference room, basement storage, and parking along the side and back of the building. If this fits your requirements, give us a call or email at geller.re@comcast.net.

Call Ray Herb, Jr. at (717) 272-5637
Commercial/Industrial Sales and Leasing

Mailing Address: P.O. Box 706, Lebanon, PA 17042





COUNTY MAP



LOCATION MAP

